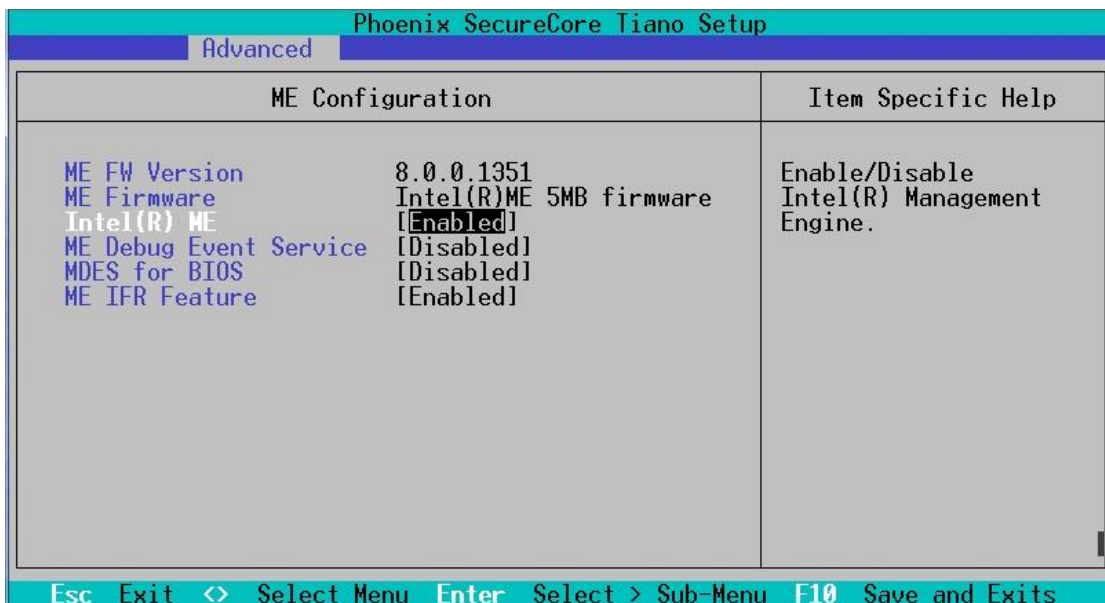
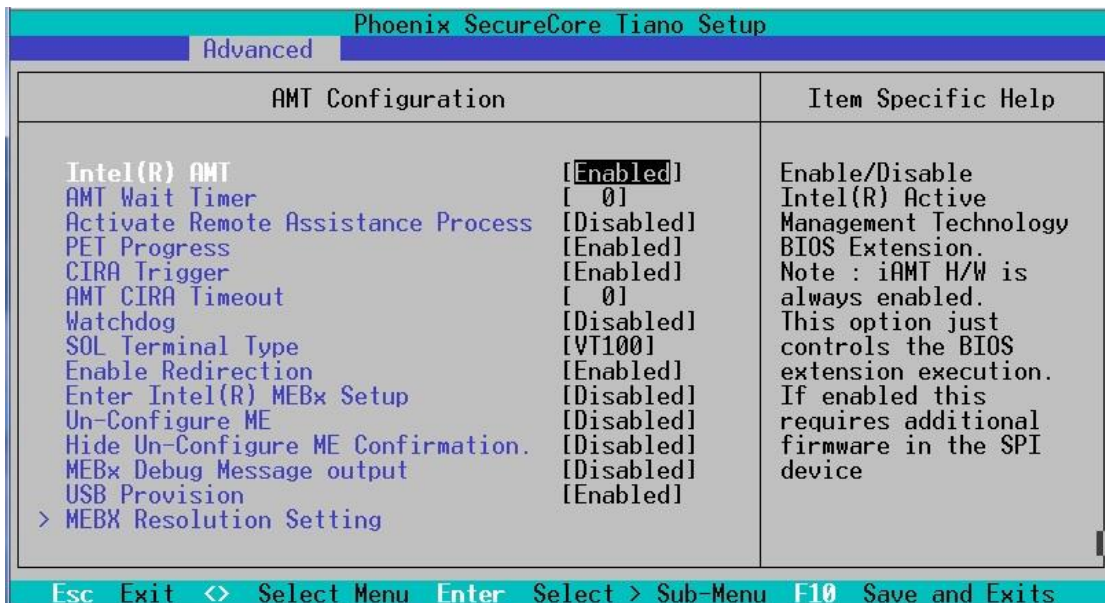


COMMELL– How to Setup Intel® AMT Solution

This guide targets to those COMMELL motherboards that support Intel® AMT Technology.

1. Please choose a CPU which supports Intel® vPro technology
2. Please access to BIOS and set AMT [enabled] and ME [enabled]



3. Please hit (CTRL+P) while booting up to get into the MEBx settings.(Motherboard needs depend HDD storages first.)



4. The default password is “ admin”.





5. Change to a stronger password. Guidelines for creating a good Intel® AMT ME password :

- The minimum length: 8 characters
- At least one digit character: 0...9
- At least one non alpha-numeric character: !,\$,~,#,_,+,-...
- Latin characters: both lower-case (a,b,...,z) and upper case (A,B,...,Z)

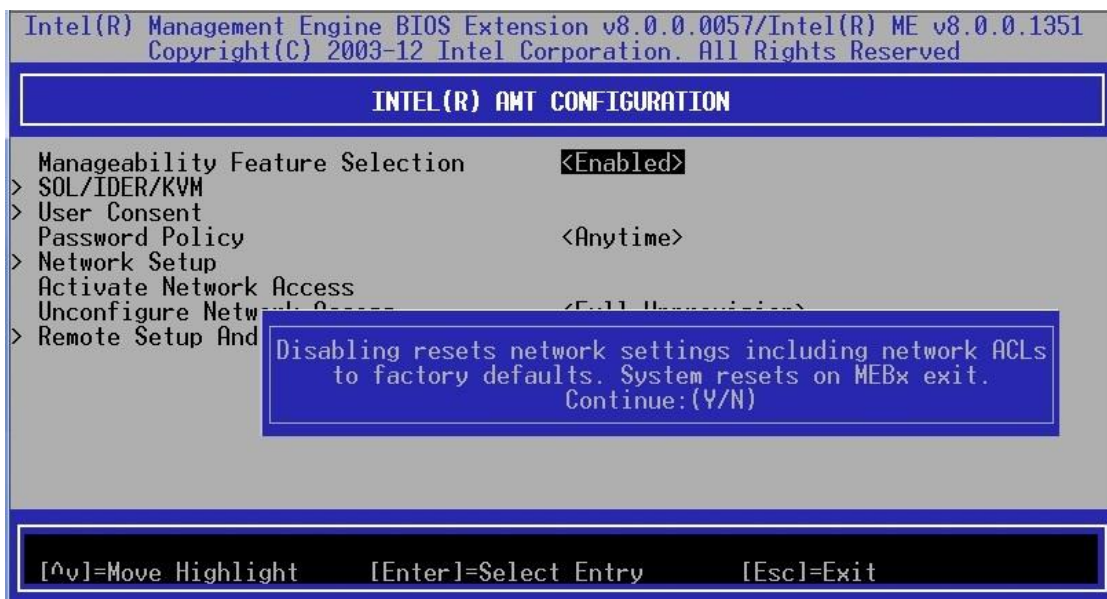




6. Choose Intel® AMT Configuration



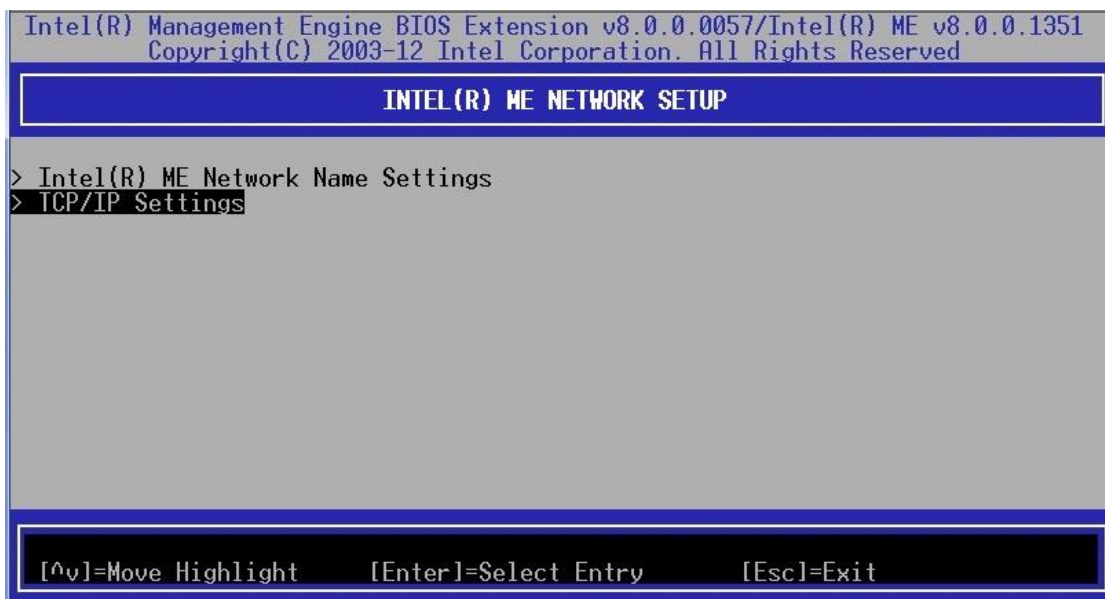
7. Set Manageability Feature Selection [enabled]



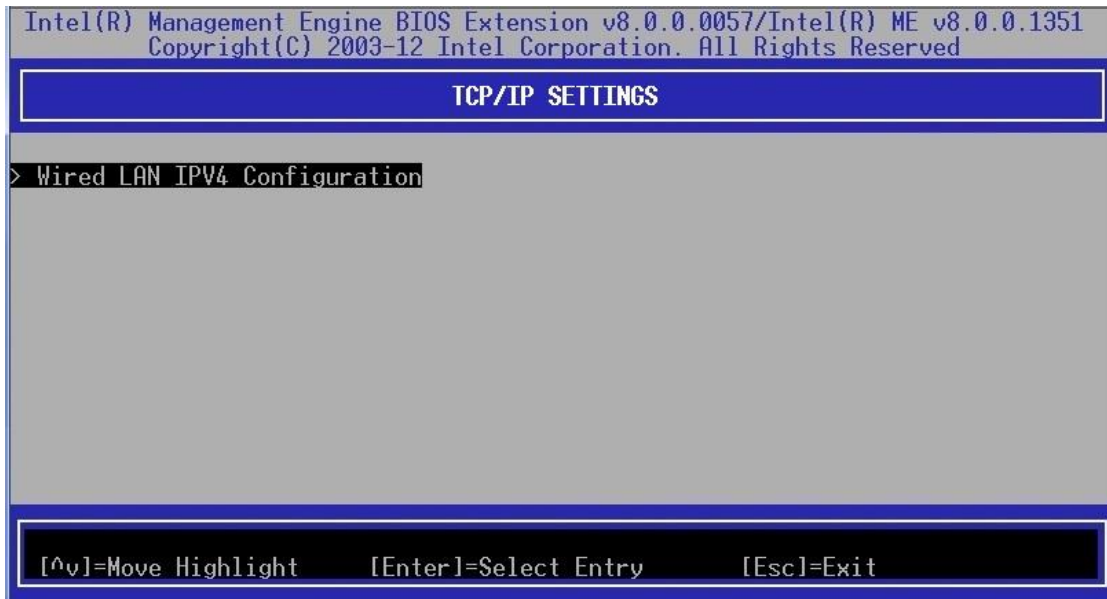
8. Select Network Setup



Select TCP/IP Settings



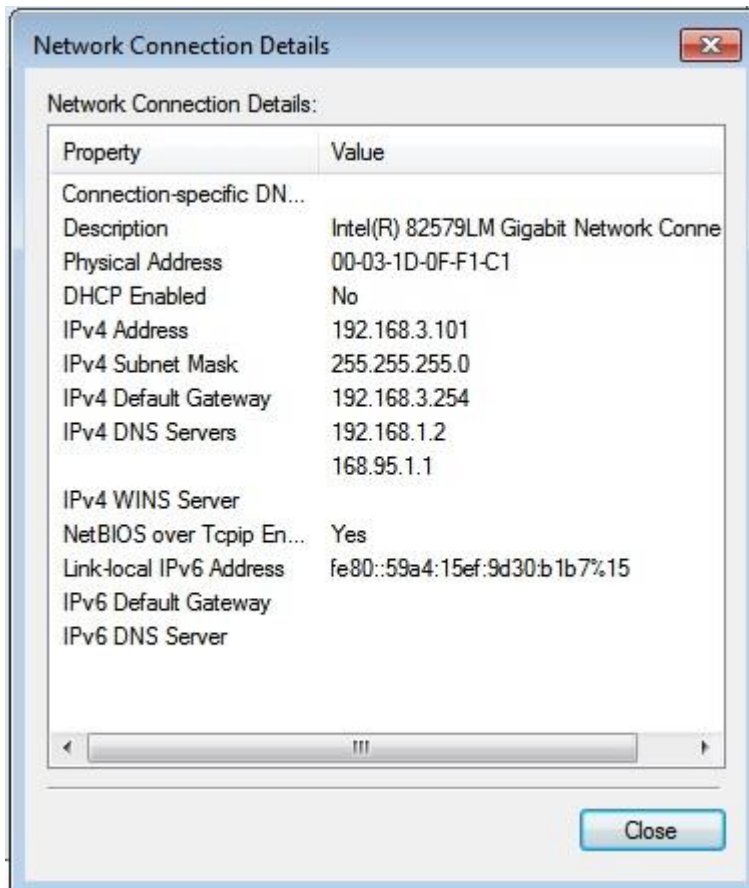
Select Wired LAN IPV4 Configuration



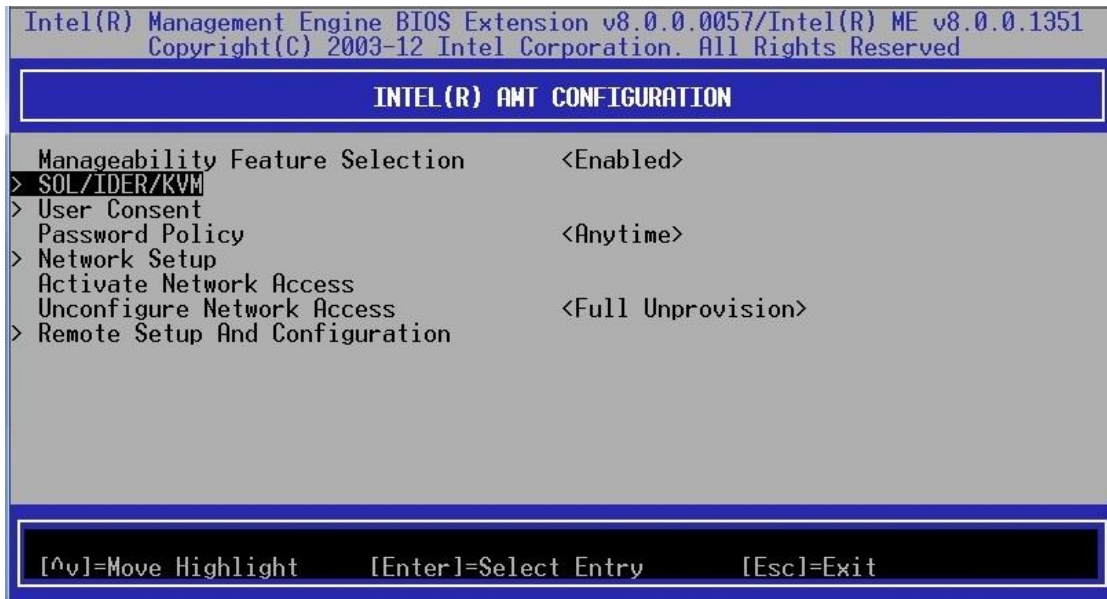
Select DHCP Mode as [Disabled]



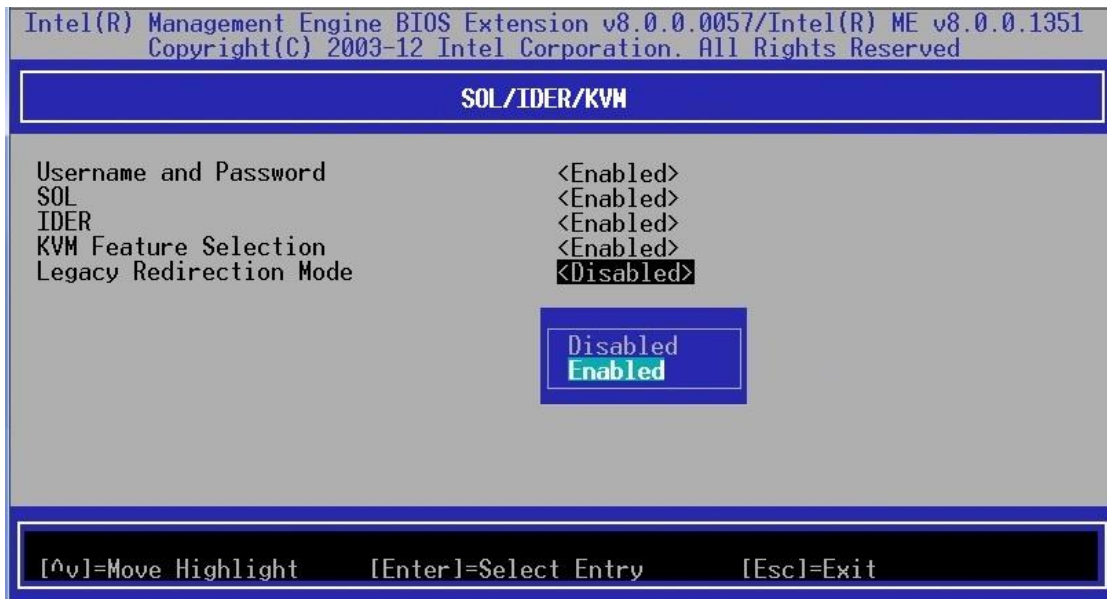
IP address settings for reference



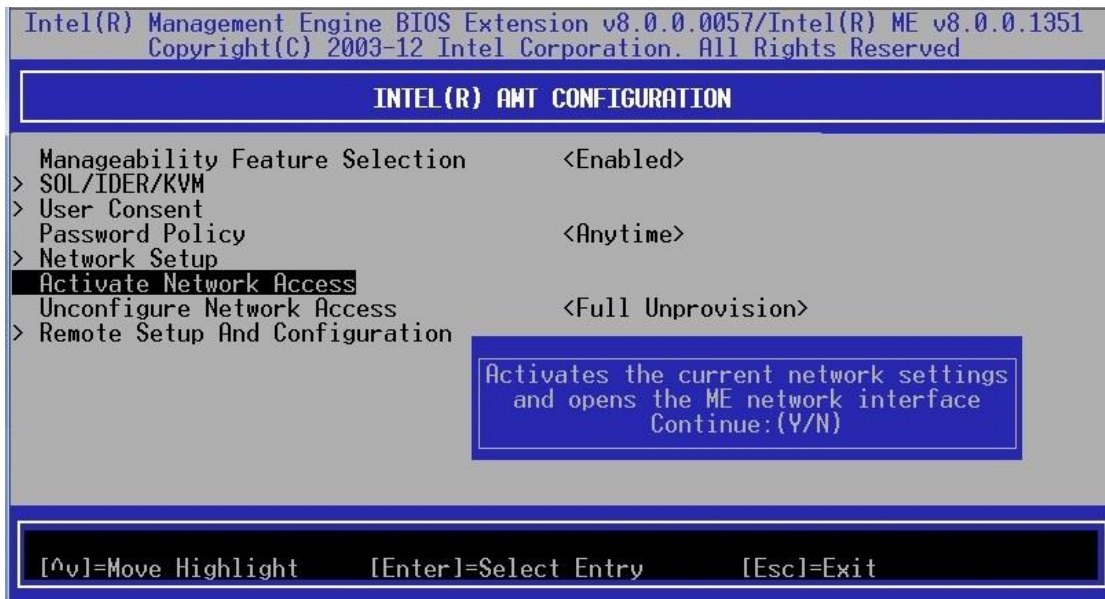
9. Back to Intel(R) AMT Configuration and select SOL/IDER/KVM



Set Legacy Redirection Mode [Enabled]



Back to Intel(R) AMT Configuration and select Activate Network Access. Hit < Y > in popup.



10. Your AMT client is set up successfully then exit MEBx



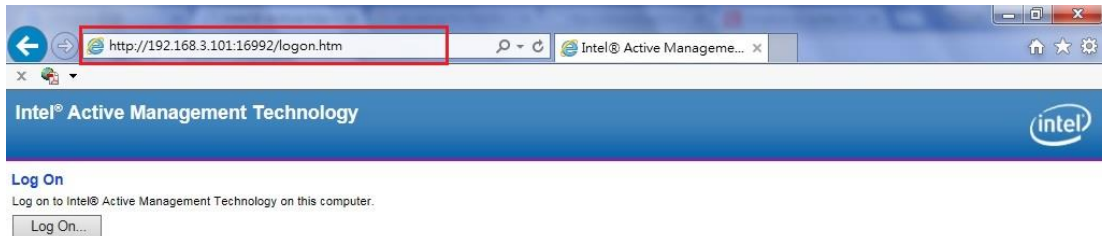
11. Log in OS(WIN7 32bit) and install MEI_alloS_8.1.0.1265_5M.exe and review event recording

12. Connect to the internet on LAN 82579LM port.

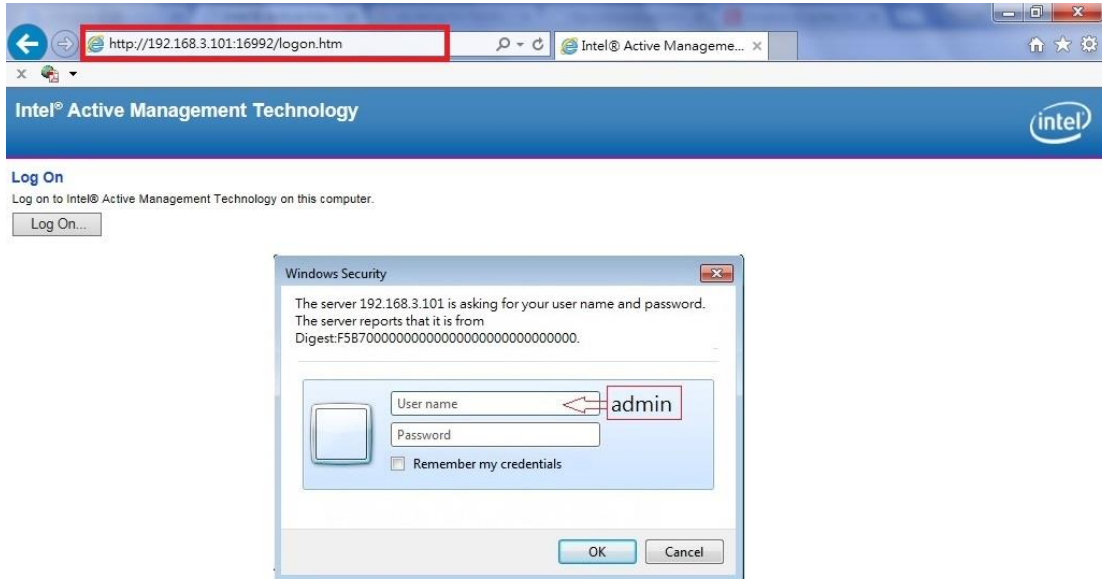
13. Open Web Browser by another connection PC and enter `http://ipaddress:16992` in browser's address bar. The ipaddress is the IP Address of client system.

For example as seen below, the full address should be

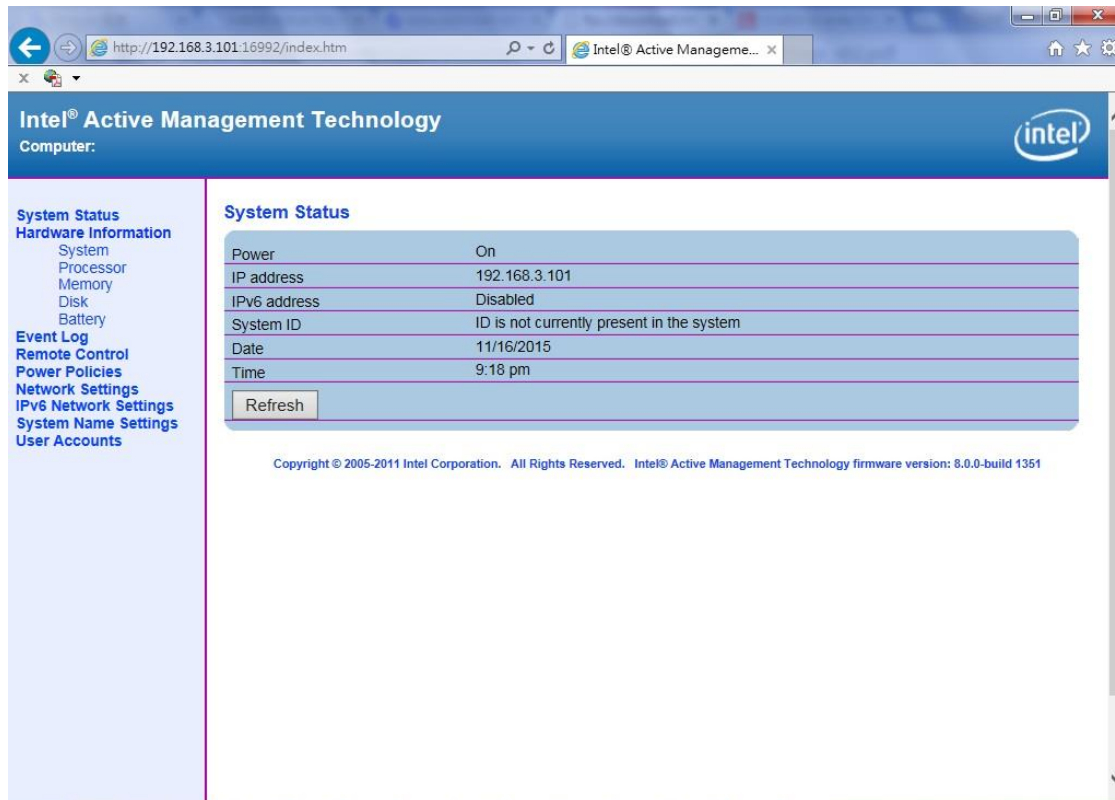
<http://192.168.3.101:16992>



14. Enter the username and password that you had used for MEBx in the logon .



15. Access to Intel® AMT web page .



16. For further information about Intel® AMT feature , please search by Manageability Developer Tool Kit on Intel website :

Reference: <https://downloadcenter.intel.com/search?keyword=Intel%C2%AE+AMT>
ftp://download.intel.com/support/motherboards/desktop/sb/intelmebxs_ettings_v02.pdf

Contact information

Taiwan Commate computer Inc.

Address	19F., NO.94, Sec. 1, Xintai 5 th Rd., Xizhi Dist., New Taipei City 22102, Taiwan.
TEL	+886-2-26963909
FAX	+886-2-26963911
Website	www.commell.com.tw
E-mail	info@commell.com.tw (General information) tech@commell.com.tw (Technical Support)

COMMELL is a brand name of Taiwan Commate computer Inc.